

## Market Review for September 2022

3<sup>rd</sup> October 2022

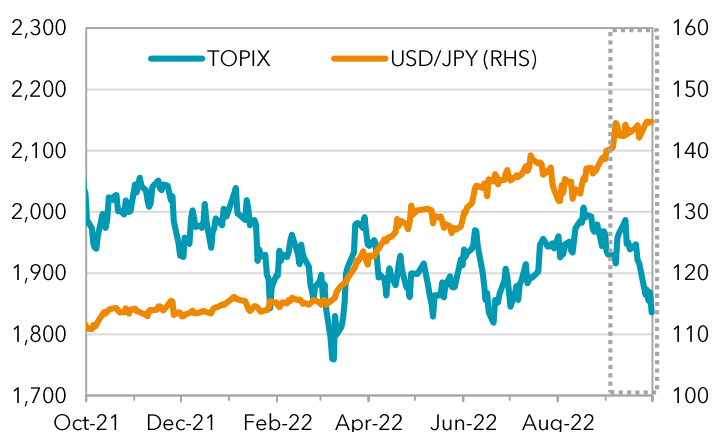
TOPIX ended down on the previous month-end. The Japanese equity market declined due to external risk factors including the Federal Reserve Bank's (FRB) hawkish stance and the UK's controversial fiscal policy. The FRB raised US interest rates by 75 bps in three consecutive Federal Open Market Committee meetings and showed their commitment to further tightening monetary policy, which shocked the global equity market. The UK's new fiscal policy followed by plunges in gilts, sterling and UK equities also dampened market sentiment.

**Table 1. Market performance**

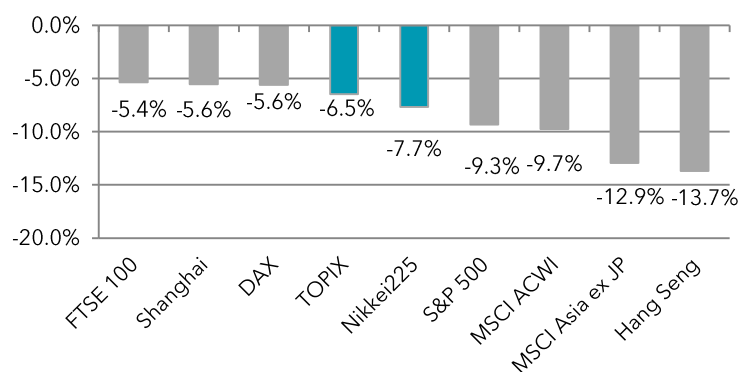
2022	As of the end of Sep 2022	Sep 2022	Year to Date
TOPIX	1,835.94	-6.48%	-7.85%
Nikkei 225	25,937.21	-7.67%	-9.91%
USD/JPY*	144.75	138.63 (31 Aug)	115.16 (end of 2021)

\*Reuters London 4pm

**Figure 1. TOPIX and USD/JPY**



**Figure 2. Global Equity Market Monthly Performance (as of the end of Sep 2022, local currency)**



**Table 2. Top 5 performing sectors in September 2022**

Sectors	Return
Land Transportation	0.86%
Air Transportation	0.75%
Pharmaceutical	0.37%
Retail Trade	-0.32%
Foods	-0.78%

**Table 3. Bottom 5 performing sectors in September 2022**

Sectors	Return
Marine Transportation	-29.84%
Mining	-14.87%
Oil & Coal Products	-11.84%
Transportation Equipment	-11.76%
Electric Appliance	-11.46%

**Table 4. Top 5 performing stocks\* in September 2022**

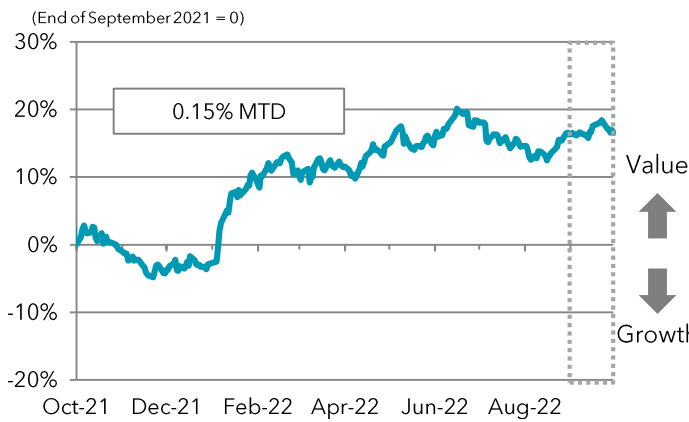
Name	Return
Eisai (4523 JP)	36.02%
Kose (4922 JP)	12.54%
MatsukiyoCocokara & Co. (3088 JP)	12.45%
ABC-Mart (2670 JP)	11.05%
Shizuoka Bank (8355 JP)	10.30%

**Table 5. Bottom 5 performing stocks\* in September 2022**

Name	Return
Kawasaki Kisen Kaisha (9107 JP)	-31.35%
Nippon Yusen (9101 JP)	-30.77%
Mitsui OSK (9104 JP)	-28.81%
Lasertec (6920 JP)	-24.27%
Mazda Motor (7261 JP)	-22.34%

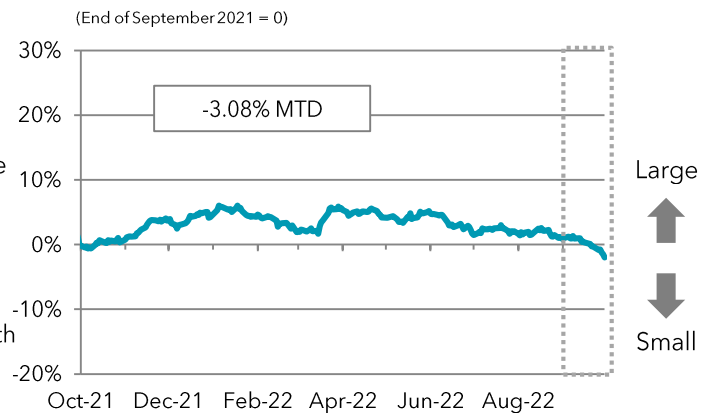
\*Stocks with a market cap of over JPY 500 billion

**Figure 3. Value-Growth Spread**



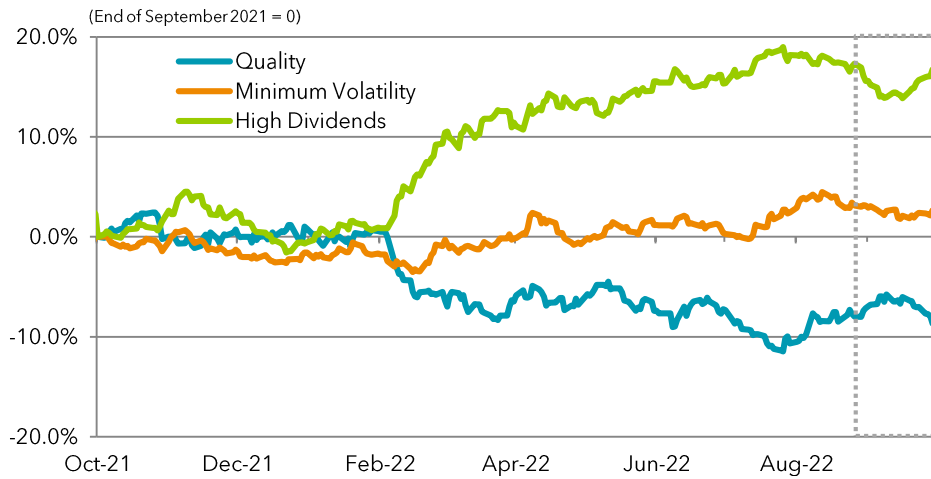
The spread between the Russell/Nomura Value Index and the Growth Index (Positive figure means value dominant)

**Figure 4. Large-Small Cap Spread**



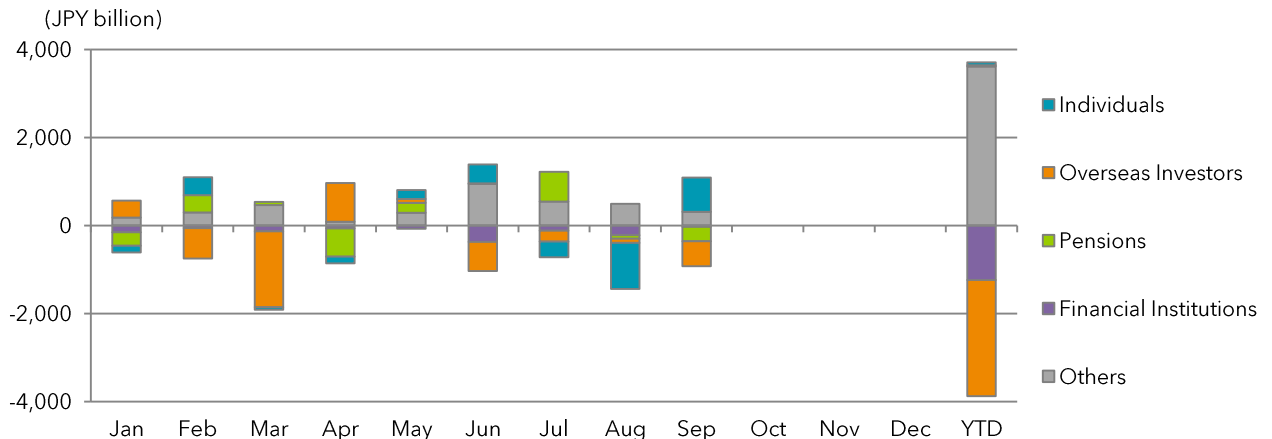
The spread between the Russell/Nomura Large Cap Index and the Small Cap Index (Positive figure means Large Cap dominant)

**Figure 5. MSCI Japan Factor Indexes Spread against MSCI Japan**



Data: Bloomberg, Nomura, SuMi TRUST (as at the end of September 2022)

**Figure 6. Monthly Investment Activities by Investor Type in the Japanese Equity Market**



Data: Bloomberg, SuMi TRUST (as of 23<sup>rd</sup> September 2022)

## Disclaimer – UK

This marketing communication is issued by Sumitomo Mitsui Trust International Limited (“SMTI”). SMTI is authorised and regulated by the United Kingdom’s Financial Conduct Authority (the “FCA”), whose address is 12 Endeavour Square, London, E20 1JN, United Kingdom.

This marketing communication has been made available to you only because SMTI has classified you as a professional client in accordance with the FCA’s rules. If you have received this marketing communication from a source other than SMTI, you should contact SMTI before using it or relying on it. You must not send this marketing communication to any other person without first having received written approval from SMTI.

The information contained in this marketing communication (the “Material”) is being made available for information purposes only and is designed to provide information on the investment services which SMTI may offer to clients.

Nothing in the Material amounts to or should be construed as an actual offer by SMTI to provide any investment services to any person. If SMTI agrees to provide any investment services to any person, those services will be the subject of a separate written agreement between SMTI and that person. Furthermore, the Material has not been prepared with any consideration of the individual circumstances of any person to whom it is communicated.

Accordingly, it is not intended to, and does not, constitute a personnel recommendation in relation to the purchase or sale of, or exercise of any rights in relation to, any financial instruments or advice in relation to any investment policy or strategy to be followed. The Material also does not contain the results of any investment research carried out by SMTI and is not intended to amount to a financial promotion of any particular financial instrument which may be referred to in it.

While SMTI uses all reasonable endeavours to ensure the Material is accurate, it has not been prepared with a view to any person relying on it. Accordingly, SMTI accepts no responsibility for any loss caused to any recipient of this document as a result of any error, inaccuracy or incompleteness in the Material, nor for any error in the transmission or receipt of this communication.

Any enquiries regarding the products should be made to:

Hirofumi Hayashi

Head of Investment Management Department

Sumitomo Mitsui Trust International Limited

155 Bishopsgate, London EC2M 3XU, United Kingdom

Direct: +44 (0)20 7562 8405

Email: [imd@smtil.com](mailto:imd@smtil.com)

Sumitomo Mitsui Trust International Limited is authorised and regulated by the Financial Conduct Authority

© Sumitomo Mitsui Trust International Limited 2024